

January 2021



# RISEN SAVIOR

## LUTHERAN CHURCH

23914 S. Alma School Road | Chandler, AZ 85248  
Church Office 480.895.6782 | School Office 480.802.1505  
[www.rslcs.org](http://www.rslcs.org) | [facebook.com/rslcs](https://facebook.com/rslcs) | @RSLCS | @RisenSaviorAZ

**Rev. Ron Burcham**  
Senior Pastor  
[Ron.burcham@rslcs.org](mailto:Ron.burcham@rslcs.org)

**Rev. Mark Hoffmann**  
Associate Pastor of  
Congregational Care  
[Mark.hoffmann@rslcs.org](mailto:Mark.hoffmann@rslcs.org)

**Joel Endicott**  
Director of Worship  
[Joel.endicott@rslcs.org](mailto:Joel.endicott@rslcs.org)

**Susan Mello**  
Director of Operations  
[Susan.mello@rslcs.org](mailto:Susan.mello@rslcs.org)

**Linda Pauley**  
Director of Early  
Childhood Education  
[Linda.pauley@rslcs.org](mailto:Linda.pauley@rslcs.org)



Happy  
New Year

- Worship Services Page 2
- Building Update Page 3
- Thank You Page 4
- Women's Ministry Page 10
- Financials Page 13-14

# WORSHIP

## Join Us Sunday In-Person or Livestream for Worship

In-Person: 7:30/11:30 am Traditional

In-Person: 8:50/10:10 am Contemporary

Livestream: 7:30/10:10 am

### Drive-Thru Communion

January 3, 17 & 31 at 12:45 pm in the Church Parking Lot.

Following the 11:30 am service, the elements will be consecrated. Please enter the parking lot from Alma School Rd. and follow the directions from the parking attendants. The sacrament will be offered, one of the Pastor's will offer a blessing, you will have an opportunity to drop off your "Give" envelope and to receive a copy of News & Notes. Everyone is welcome!

JOIN US FOR  
COFFEE AND DONUTS  
BETWEEN SERVICES

ITS A GREAT WAY TO  
CONNECT WITH OTHERS

### Sermon Archive

If you are unable to join us for livestream worship at the times available, don't forget that the entire sermon is uploaded after 1:00 pm the same day. Simply visit [rslcs.org](http://rslcs.org) under "Sermon Archive" and all previous services are available to view at your convenience.

### Ways to Give Each Week

**Text to Pay** - Text the amount you'd like to give to 855.946.1637. You'll receive a text reply with a link to complete the transaction.

**E-Give** – Click on the "Give" link at the top of the Home page on the website, [rslcs.org](http://rslcs.org) and follow the directions.

**Mail** – Send your check payments to: RSLCS 23714 S. Alma School Rd., Chandler, AZ 85248

**Give In-Person** Place your check or cash in a "Give" envelope and drop in a Giving box on Sundays.

Facebook: [facebook.com/rslcs/](https://facebook.com/rslcs/)

Twitter: @RSLCS

Instagram: @RisenSaviorAZ



## BUILDING UPDATE

### North Building to Open After the First of the Year

Last month the parking lot was laid, much of the landscape is being planted, the organ is being installed - the end is in sight! Final details will be seen in the coming days and weeks. Inspections have been scheduled and once we pass all of them, Maricopa County will issue a Certificate of Occupancy. Once we have that, we can begin to move in and start having worship and other activities. This should happen shortly after the first of the year so keep an eye out for an announcement this month!

### Landscape Ministry

This group meets Thursdays at 6:00 am for fellowship and to care for the church campus grounds. Contact Chuck for more information [cmdeuth1@gmail.com](mailto:cmdeuth1@gmail.com).



### Join Women's Ministry on Facebook

All women are invited to join this private group on Facebook. This is a place where women can connect, support and do life together. This month we will focus on "Self Care".

You can find this group under our RSLCS Facebook page "Groups", "Women's Ministry".

Contact Annie for details at [womensministries@rslcs.org](mailto:womensministries@rslcs.org).



There is a flower chart available for anyone who would like to remember a loved one or a special occasion. The chart is near the stairwell as you head to the Fellowship Hall. Sign-up today, cost is \$40.00.



To listen to Lutheran Hour Ministries weekly program: Visit their website at [lhm.org](http://lhm.org); Scroll down on the webpage to "This week on TLH", then scroll further to "Listen Now" and enjoy daily devotions and the broadcast each week.

### Church Office Hours

#### January Office Hours:

Monday-Thursday 8:00 am—4:00 pm

Fridays 8:00 am—12:00 pm

Closed at 12:00 pm New Year's Eve

Closed New Year's Day

### Blood Drive

**January 21, call Dave to schedule an appt.**

**480.560.0295.**



# ANSWER



A HUGE thank you to those who participated in giving stocking stuffers items from the Angel Tree. It's always amazing to see God at work and to give back in such an impactful way this time of year. We were able to give 64 full stocking/bags to the kids!

## Thank You!



All 64 stockings ready for pick-up.



Here is the inside contents of one of the stocking bags. Each stocking was unique, but held the same quality of items for each child.

## January Women's Ministry Mission:

### Blanket Drive Collection

Join us in January to spread "Warmth and Hope in 2021". We are looking for new blankets for a boy or girl to be donated. Any fabric is welcome. Our goal is to provide a blanket for all 300 children at the charter school for homeless youth (ages 5-21). Place the blankets in the boxes in the Narthex area. If you are unable to bring in a blanket, you can "Give" on the website, [rslcs.org](http://rslcs.org). Contact Annie if you have any questions 480.203.1880.




## 2020 Update:

- 417 boxes from Risen Savior were donated
- \$1,255 in check donations from our church were made
- \$200 in cash donations from our church
- 14,077 boxes collected for the Southeast Valley Mountain team (This is about 10 churches)

Once again, what a generous congregation we have! Bringing the love of Jesus to the world!



## ANSWER Continued...



# GRIEF SHARE

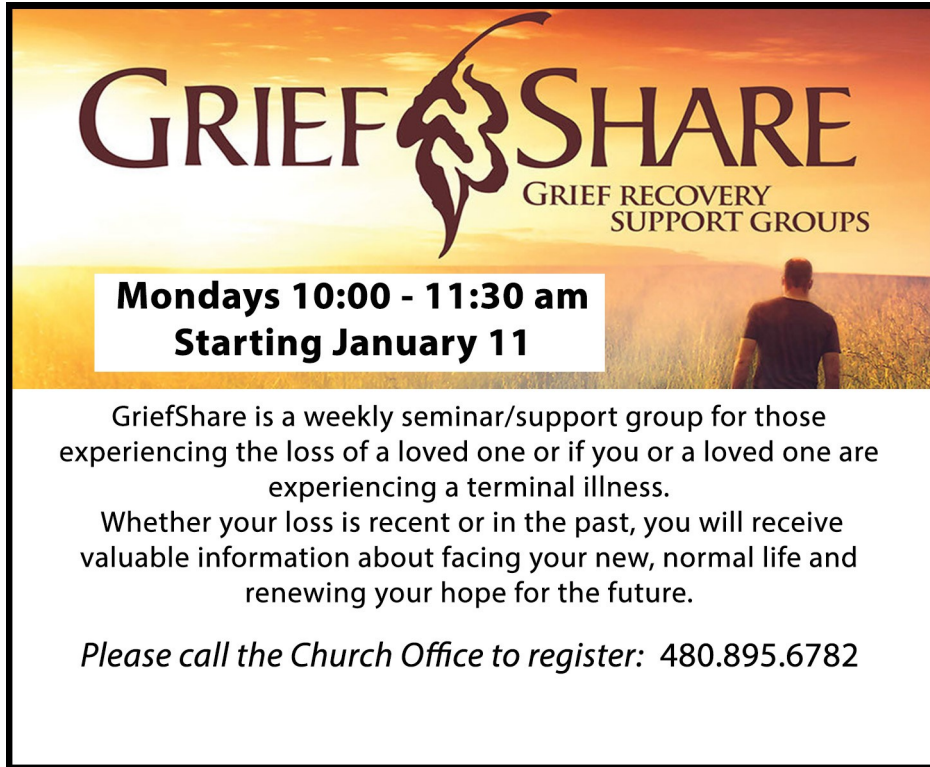
GRIEF RECOVERY  
SUPPORT GROUPS

**Mondays 10:00 - 11:30 am**  
**Starting January 11**

GriefShare is a weekly seminar/support group for those experiencing the loss of a loved one or if you or a loved one are experiencing a terminal illness.

Whether your loss is recent or in the past, you will receive valuable information about facing your new, normal life and renewing your hope for the future.

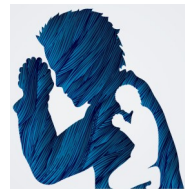
*Please call the Church Office to register: 480.895.6782*



### Prayer Warriors

Wednesdays at 9:30 am in  
The Perfect Place.

If you have a passion for talking to the Lord in prayer or lifting up those who need physical, emotional or spiritual support, join us on Wednesdays! Contact Joan at [mandjscott@cox.net](mailto:mandjscott@cox.net) with any questions and to RSVP for social distancing.



*Share the Warmth.*  
Sometimes it takes more than a parka to keep another person warm—it takes caring, dependable Christian presence. Stephen Ministers are the warmth of God's love with those who need it most. If you think that this sounds like a good match for you, contact Pastor Mark at [mark.hoffmann@rslcs.org](mailto:mark.hoffmann@rslcs.org) for more information.

#### TO PLACE A PRAYER OR VISIT REQUEST:

- † Submit a prayer request by filling out a Prayer card found in the pews and place it in the offering plate or email [prayers@rslcs.org](mailto:prayers@rslcs.org). Prayers remain on the list for 4 weeks, unless an update is provided.
- † To have someone pray with you by phone or in person, email [prayerwarriors@rslcs.org](mailto:prayerwarriors@rslcs.org).
- † To notify the church of a surgery or hospitalization, please email [visits@rslcs.org](mailto:visits@rslcs.org). Please include the facility and contact number.
- † After hours that need a timely response by a Pastor, please call 480.895.6782 Ext. 120 and leave your name and phone number.



### ONLINE PRAYER MEETING

Tuesdays at 9:00 am via Zoom

Join us for this new, ongoing experience of meeting for prayer online. We'll follow a written liturgy of prayer and scripture, and take personal prayer requests as well. The link to the prayer meeting can be found on the home page of our web site: [www.rslcs.org](http://www.rslcs.org) and click on "Online Meetings"

Questions? Contact Dave at [dave.klampert@rslcs.org](mailto:dave.klampert@rslcs.org)

## ANSWER Continued...

---



Arizona Christian School Tuition Organization

If you're an Arizona taxpayer, you can make a donation to ACSTO and **receive a dollar-for-dollar state tax credit** in return! But what does that mean?

At the end of the year, if you typically get a refund, you'll get a bigger refund. If you typically owe, you'll owe less.

This is because a tax credit is different than a normal charitable deduction—rather than reduce your taxable income, **it directly reduces your state tax liability** (a.k.a. the tax you pay). For example, if your tax liability (obligation) is \$1,000, and you make a \$750 donation to ACSTO, your liability will be reduced by \$750—meaning that your tax liability will only be \$250! **Keep in mind, if you usually receive a refund, a tax credit makes it bigger—it is to your advantage to participate in this program.**

In addition, you can make a donation all the way up until **April 15** (your donation must be made prior to filing your taxes—if you are filing an extension your donation needs to be made by April 15), and **still claim the credit for the previous tax year!**

The best part? ACSTO uses your tax credit donation to award tuition scholarships to Christian School students attending one of our [Partner Schools](#)! **When you make a donation, you can identify a specific school, or even recommend a specific student to be considered for a scholarship!**

Because of your support, thousands of families, who otherwise couldn't, have been able to afford Christian Education—none of this is possible without you!

What are you waiting for? More than 85,000 Arizona taxpayers have already joined us to make Christian Education affordable for 38,000 students! Point the way for Arizona students today!

## APRIL 15 DEADLINE

Donations can be mailed or submitted online to ACSTO prior to filing taxes, but no later than April 15 (whichever comes first), and still be eligible for the tax credit for the previous tax year. For any donations made between January 1 and April 15, it is up to the donor to determine which tax year they will claim the donation. Donations must be postmarked or submitted online by midnight of April 15—even if you plan on filing an extension. (The federal deadline for charitable deductions is still December 31.)

PO Box 6580  
Chandler, AZ 85246  
480.820.0403  
ACSTO.org

# ANSWER Continued...



## Hooks and Needles Ministry Update

Tuesdays from 10:00 am—12:00 pm in the Fellowship Hall - **UPDATED.**

We are practicing social distance by having each person at their own table wearing a mask. Hand sanitizer and masks will be available. Please join us. If you are still not comfortable in coming you are more than welcome to drop off your strips to be sewn into blankets, and/or pick up yarn. We will also be accepting donations of yarn to make afghans to donate to the Salvation Army.



## Piece Maker Quilters-RSVP

Two Sessions on Wednesday's in the Fellowship Hall.

First session is from 9:00 am - 12:00 pm and second session is 1:00 pm - 4:00 pm.

Wednesdays you can still find us splitting into two groups so we can continue social distancing/mask wearing. If you are interested in joining us, please call Sandra Devine so we can keep the groups small.

Even though 2020 was filled with illness, closures and inconveniences, by the grace of God, the quilting group continued to meet weekly and actually succeeded in sewing more quilts this year than last year!

This year 390 quilts and 425 knitted hats were donated to organizations such as Child Crisis Arizona, Maricopa Police/Advocacy Center, Salvation Army, Risen Savior School, Time Out in Payson, Shop Box Ministries and to Annie Wolfe for Breast Cancer Awareness and Children First Leadership Academy.

MANY thanks for the support received through our congregation here at Risen Savior. You have generously provided fabric, sheets, yarn and even already made quilts and quilt tops.

We also thank those who supported our Quilt and Bake Sale last month. Thanks for the donations of baked goods and also for purchasing quilts and craft items. Your support of our ministry is heartwarming. We couldn't do this without you. We pray 2021 will be a year of healing and peace for all.

Always check the weekly News & Notes should any changes in our meetings times and dates occur. Contact Sandi 480.202.5772 or Barb 602.565.7137 with any questions.



## Braille Update

Due to COVID-19 numbers increasing in Arizona, we do not plan to begin meeting this month. Please keep an eye out for future updates.



## Free Life Planning Assistance

Do you have questions regarding your will, trust or gift planning? It's something most of us put off even though our circumstances are constantly changing. We provide a FREE service to assist with your life planning needs. Contact the Church Office for more information 480.895.6782.



## ANSWER Continued...

### Visitations

If you or someone you know would like a visitation, please notify the church of a surgery, hospitalization or other care emergency by emailing [visits@rslcs.org](mailto:visits@rslcs.org). Please include the facility and contact number.



### Lutheran Social Services of the Southwest

Showing kindness, doing justice and serving those in need, we are located statewide and serve 10 counties across Arizona. Arizona non-profits do many things well that make this state a better place to live but we do this with the support of many partners. You are the rock stars. Thanks for creating the kind of community God envisions for Arizona. To learn more about the work of LSS-SW, please visit their website and subscribe to their e-newsletter, [www.lss-sw.org](http://www.lss-sw.org).



### Align Your Investments with Your Personal Values

Lutheran Church Extension Fund (LCEF) empowers ministries to share the Gospel and build God's Kingdom through Word and deed. An investment with LCEF puts your blessings from God to work for ministries, supporting what you value most. Making disciples is something we all can share through the LCEF ministry. There are a variety of LCEF investments to suit your needs. Find more information at [lcef.org](http://lcef.org) or call 800.843.5233.

### PACE Assistance

Seniors, if you are looking for information regarding transitioning into Independent or Assisted Living, contact PACE (People, Access, Community), at 480.246.3515. They will help you make informed decisions and their housing directory will help you narrow your options to make the process easier. You can also find them on the internet at [www.seniorhousing.org](http://www.seniorhousing.org).

## The Perfect Place

The Perfect Place is open for families to bring their loved ones for an afternoon of fellowship, friendship and fun! We are a faith-based, 501c3 non-profit, Adult Day Care where a loved one may spend time in a safe, structured environment surrounded by staff and volunteers who treat each individual with dignity, compassion and respect. The sessions include a wide variety of activities including educational challenges, games, art, music, entertainment, snacks and more. Contact the office at 480.895.2892 or [execdir@thepperfectplacecare.org](mailto:execdir@thepperfectplacecare.org) and our staff would be happy to speak with you.

#### Hours of Operation:

<b>Tuesday</b>	<b>1:00 pm to 4:00 pm</b>
<b>Wednesday</b>	<b>1:00 pm to 4:00 pm</b>
<b>Friday</b>	<b>1:00 pm to 4:00 pm</b>
<b>(All day options available)</b>	

## ANSWER Continued...



### ACTIVE DUTY MILITARY PERSONNEL

We would like to acknowledge and pray for all active duty military personnel associated with RSLCS. Please contact us on the prayer request line [prayers@rslcs.org](mailto:prayers@rslcs.org), a pew card or by phone with their names. Please include an address so we can send a card. Names are posted in the display case outside to the left of the Sanctuary. The Service flag is an official banner authorized by the Department of Defense for display by families who have members serving in the Armed Forces during any period of war or hostilities the United States may be engaged in.



### Sunday Ministry Partner Sign-up Process

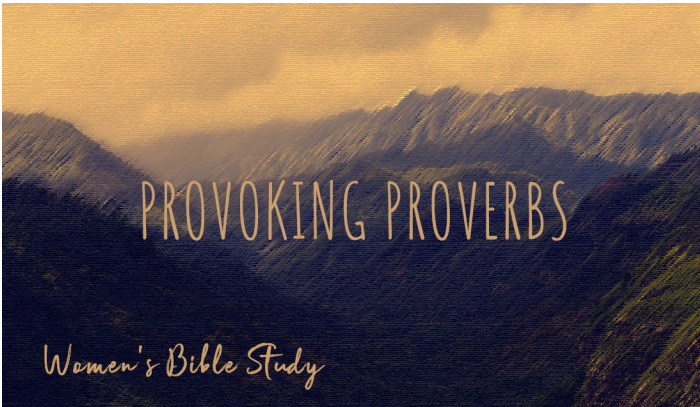
Our Sunday morning Ministry Partner positions are scheduled through Planning Center. We are using a tool in Planning Center called "Sign-up-Sheets". Rather than the office scheduling, now you will be able to choose which Sundays/services you'd like to serve.

At the beginning of each month you will receive an email asking you to select which Sundays you would like to serve. These dates will be saved in your Planning Center account and you'll receive reminder emails as the date approaches.

We know that some of our married couples that use Planning Center share the same email address. If you do, here's what we need ONE of you to do: (One of you may keep your current password, but the other needs to create a new one). Enter the link to get to the sign-in page of Planning Center at <https://accounts.planningcenteronline.com>. Type in your email address and click the checkmark button. Remember, if you share an email address with another Planning Center user, you must keep track of which account you're accessing when you are signing up or making changes to your schedule.

For more details on how to get more involved, see the bottom of the website home page. There is a short video to assist you in how to sign-up. Contact the Church Office with any additional questions.

## WOMEN'S MINISTRY



### NEW Women's Evening Bible Study

Begins January 12 in The Perfect Place—RSVP. This study meets the 2nd and 4th Tuesdays of the month. We will begin to study Provoking Proverbs (Wisdom and the Ten Commandments) written by Pastor David Coe. Please contact Ruth Ann Endicott 480.393.3801 if you plan to attend. We want to have a lesson book waiting for you.



### NEW Women's In-Person Bible Study—James

Begins January 14 at 9:00 am in The Perfect Place.

Join us for a new, weekly, in-person Bible Study: James, a study from Concordia Publishing House. We will be in-person or you can read the study on your own with the schedule. RSVP for a copy of the study, contact Annie at [womensministries@rslcs.org](mailto:womensministries@rslcs.org) with any questions. All women are welcome!



### NEW Women's Online Study

Begins January 13 at 9:30 am - RSVP

Join us weekly or follow along with the video instructions provided. Be sure to purchase your book in advance, copies are available for \$10.99. Scholarship are available if you need help purchasing a book. Be sure to RSVP for this study, contact Annie at [womensministries@rslcs.org](mailto:womensministries@rslcs.org). Invite a friend!



### LWML Business Meeting

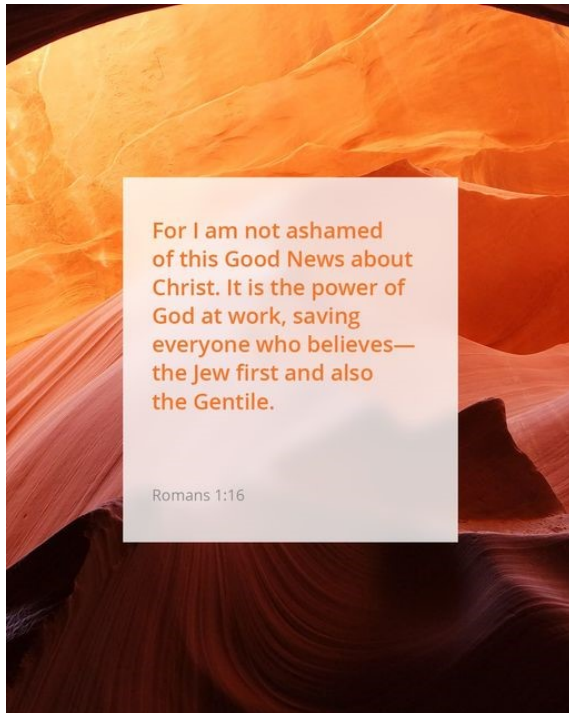
January 14 at 1:00 pm in The Perfect Place.

All women are welcome to join us for fellowship and Bible Study.

**Mission Updates:** A Mission Grant of \$98,400 is being given to Music Outreach, Classes and Resources on the border. This is happening at Ysleta Lutheran Mission Human Care, El Paso, Texas. Please pray for all LWML Mission Grants that they will impact people around the world for Christ.



# DEVELOP Continued...



## Early Learning Center (ELC)

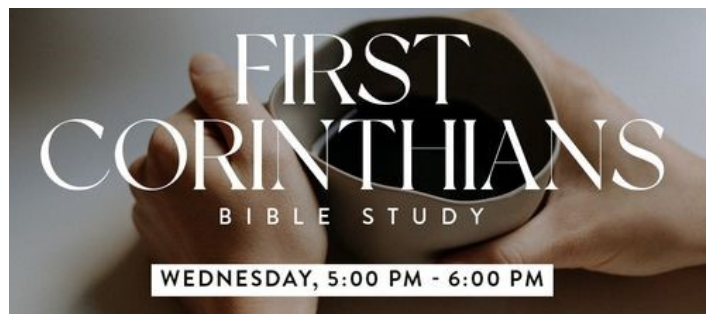
Our ELC is always available for tours.

Contact Jeanne with any questions  
480.802.1580 or

do a virtual tour online at

[www.risensaviorpreschool.org](http://www.risensaviorpreschool.org).

Fall Registration will be open soon!



These studies are returning January 6 & 7

**In-Person:** Wednesdays at 5:00 pm in The Perfect Place **OR Online:** Thursdays at

10:00 am via Zoom. Everyone is welcome to join us. Contact Pastor Mark at [mark.hoffmann@rslcs.org](mailto:mark.hoffmann@rslcs.org) with any questions.



Abilene, Amasiah, Bathsheba,  
Cinnamon, Dionysius, Earnest,  
Ebenezer, Fowler, Fuller, Gabriel, Gad,  
Gemariah, Hachilah, Hanameel, Ibri,  
Ichabod, Jaaziel, Jesimiel, Kenan,  
Keturah, Lamech, Lucius, Mehetabel,  
Naaman, Nicholas, Nicodemus,  
Onesimus, Oshea, Perez, Philemon,  
Rahab, Raphael, Rephaiah, Saffron,  
Serah, Tabitha, Tamara, Ulla, Zachariah



## DEVELOP Continued...

# Youth and Teen Information!



### JAM! Pre-Confirmation (Age 3- Grade 6)

Sundays at 10:10 am Check-in to the left of the Sanctuary, meet in the second floor classrooms.

**Pre-Confirmation:** This program is a rotating two-year pre-confirmation class that will focus on the old and new testaments. Pre-confirmation is a time for students to begin the discussions about their faith and prepare for the coming years of study in Ignite/Confirmation. Join us for our series: "Subscribe Now".



### Ignite Confirmation (Grades 7-8)

Sundays 6:00 pm in the Fellowship Hall.

These meetings consist of weekly bible studies, interactive games and socialization. Join us as we continue the Old Testament.



### Impact (Grades 9-12)

Sundays at 7:00 pm in the Fellowship Hall.

These students will participate in positive, encouraging, and faith-focused activities where relationships continue to grow and thrive. Throughout the year, Impact youth will have opportunities to lead and volunteer in our church, our community, nationally and globally. Join us for our series: Goals.

*Contact Jill at [jill.lopez@rslcs.org](mailto:jill.lopez@rslcs.org) for meeting details for any of our youth groups.*



### 2020 Confirmation Ceremony Mandatory Meeting

January 3 at 11:30 am in the Fellowship Hall.

There will be a mandatory Youth/Parent Meeting THIS Sunday. The meeting will outline plans and requirements for the Confirmation Ceremony that will be on January 31.

Follow the Kids on Instagram and Facebook: **@RSLCSKids**  
Follow the Youth on Instagram and Facebook: **@RSLCSYouth**  
*These are private social media pages for the Youth and Parents.*

# Risen Savior Monthly Financial Review

---

The following is a summary of financial activity for Risen Savior Lutheran Church. If you would like more detailed reports, please contact our Business Manager, Susan Mello at [susan.mello@rslcs.org](mailto:susan.mello@rslcs.org).

IT'S NOT TOO LATE!

You can help a child receive a Christian education at no cost to you.



The Arizona Christian School Tuition Organization (ACSTO) and the Arizona Lutheran Scholarship Organization (ALSO) have merged.

If you pay Arizona state income taxes, you can make a donation to ACSTO/ALSO and claim the amount you give as a dollar-for-dollar tax credit that lowers your bill. There is no out of pocket cost to you. Please go to: [www.acsto.org](http://www.acsto.org) to make your donation. ***Remember to list Risen Savior Lutheran School as your recommended school.*** These funds will directly impact our Kindergarten Class here at Risen Savior.

## Paycheck Protection Loan

As you may recall, Risen Savior Lutheran Church applied for and was granted a Paycheck Protection Loan earlier this year. On December 17, 2020 we received confirmation from our Bank and the Small Business Administration that ***our loan has been forgiven in full.*** The impact of this loan will be included in our year end results.

This is such a blessing to the ministry at Risen Savior and we give all the glory to God for this amazing gift!

## Financial Summary for November 2020:

Below, you will see the details for July financials. Please note that these results do not yet reflect the impact of our Paycheck Protection Loan.

### Giving Results

Giving was ***under*** budget by (\$28,494) for the month of November and ***under*** budget by (\$107,275) CYTD20.

For CYTD20, we are at 92% of the budget for Giving. The shortfall is predominantly in Loose Plate giving.

### Spending

Spending was ***under*** budget by (\$38,188) for the month of November and ***under*** budget by (\$230,565) CYTD20.

The Preschool has underspent due to control over variable costs such as food and labor that has been impacted by lower enrollment.

The Church has put controls in place to monitor expenses and adjust as needed based on Giving.

In light of the decrease in Giving and Preschool Revenue, we continue to monitor expenses and limit based on necessity.



# Risen Savior Financial Review Continued...

## Preschool and Kindergarten (PS&K)

PS&K Net Income was **over** budget by \$2,852 for the month of November and **under** budget (\$132,890) CYTD20.

Current enrollment at the Preschool is approximately 75% of the pre-COVID-19 levels.

However, there is now a need to open an additional classroom, which will increase enrollment.

## Net Operating Cash

As of November 30, 2020, Operating Cash is a **negative** (\$210,436) which is an increase of \$15,162 from the end of October.

Please note that this does NOT yet include the impact of the PPP Loan.

High Level Statement of Financial Income and Expense							
	Nov-20	Nov-20	\$ Over	FYTD20	FYTD20	\$ Over	Annual
	Actual	Budget	Budget	Actual	Budget	Budget	Budget
Giving	119,556	148,050	(28,494)	1,262,775	1,370,050	(107,275)	1,535,760
All other income	701	4,230	(3,529)	16,170	46,530	(30,360)	50,800
<b>Total Church Income</b>	<b>120,257</b>	<b>152,280</b>	<b>(32,023)</b>	<b>1,278,945</b>	<b>1,416,580</b>	<b>(137,635)</b>	<b>1,586,560</b>
Preschool & Kindergarten	81,724	95,600	(13,876)	789,656	1,074,755	(285,099)	1,170,355
<b>Total Operational Income</b>	<b>201,981</b>	<b>247,880</b>	<b>(45,899)</b>	<b>2,068,601</b>	<b>2,491,335</b>	<b>(422,734)</b>	<b>2,756,915</b>
<b>Operational Expenses</b>	<b>180,242</b>	<b>218,430</b>	<b>(38,188)</b>	<b>2,167,965</b>	<b>2,398,530</b>	<b>(230,565)</b>	<b>2,622,940</b>
<b>Net Income/(Loss)</b>	<b>21,739</b>	<b>29,450</b>	<b>(7,711)</b>	<b>(99,364)</b>	<b>92,805</b>	<b>(192,169)</b>	<b>133,975</b>
High Level Statement of Operational Cash							
November 30, 2020							
Cash/Receivable Balance 11.30.20		953,478					
Liabilities		(1,200)					
Restricted Assets		606,678					
Unrestricted Assets							
Designated Savings		409,895					
Designated Programs		148,541					
Total Unrestricted Assets		558,436					
Net Operational Cash 11.30.20		(210,436)					
Cash/Receivable Balance 10.31.20		1,079,649					
Liabilities		(522)					
Restricted Assets		783,996					
Unrestricted Assets							
Designated Savings		383,970					
Designated Programs		137,803					
Total Unrestricted Assets		521,773					
Net Operational Cash 10.31.20		(225,598)					
Net Operating Cash Change		15,162					



Janice	Kabele	1/1	Jay	Kunka	1/13
Mikayla	Dulaney	1/1	Duane	Anderson	1/14
Elaine	Schaffer	1/3	Louise	Longlet	1/14
Austin	Culp	1/3	Claire	Ritchie	1/14
Dorothy	Mitchell	1/3	Leona	Wolf	1/14
Ronald	Mitchell	1/3	Kinzi	Zirpel	1/14
John	Della Chiesa	1/3	Ronald	Schaab	1/15
Allan	Haugen	1/3	Jayne	Westlind	1/15
Kenna	Mitchell	1/3	Tracy	Hippensteel	1/15
Joyce	Zwar	1/4	Noah	Bernal	1/15
Don	Archibald	1/5	Ann	Korpalski	1/16
Sheila	Hurst	1/5	Douglas	Newland	1/16
Madison	Mitchell	1/5	Julia	Golichowski	1/16
Zachary	Melendez	1/5	Victoria	Lopez	1/16
Michael	Shockley	1/6	Dick	Meyer	1/17
Marcia	Weiss	1/6	Edna	Hayn	1/18
Kristin	Lill	1/6	Carolyn	Kroeger	1/18
Connor	McLean	1/6	Margaret	Kelly	1/18
Walter	Moore	1/7	Linda	Pauley	1/18
Robert	Connors	1/7	Beth	Zych	1/18
Donna	Kerr	1/7	Aaron	Wolf	1/19
Teresa	Golichowski	1/7	Bonnie	Kane	1/20
Michael	Thayer	1/9	Kelleigh	Burns	1/20
Kathleen	Lund	1/9	Neil	Curtis	1/21
Mikaela	Correa	1/9	David	Keipert	1/21
William	Ellis	1/10	Kathleen	Newman	1/21
Megan	Padilla	1/10	Christopher	Lopez	1/21
Gwendolyn	Jacox	1/11	Don	Henke	1/22
Nancy	Watkins	1/11	Roger	Osten	1/22
Rebecca	Derr	1/11	Bron	Steinmetz	1/22
Annie	Appleton	1/11	Jeffrey	Wirth	1/22
Jo	Keuer	1/12	Makena	Erickson	1/22
Charlotte	Herrington	1/12	Sue	Best	1/23
Bailey	Swallows	1/12	Kristy	Ausdemore	1/23
Jimmie	Dean	1/13	Caitlin	Bump	1/23
Linda	Martin	1/13	Richard	Brettfeld	1/23
Josie	Barden	1/13	Gary	Lawrence	1/24
Colton	Gloyd	1/13	Kevin	Lantz	1/24



Eva	Ellis	1/25
Andrew	Dunning	1/25
Pete	Karubos	1/26
Carol	Rittenback	1/26
Warren	Cole	1/26
Patrick	Mitchell	1/26
Gary	Voelker	1/27
Cozetta	Peters	1/27
Mojo	Krup	1/27
Julie	Constance	1/27
Delores	Logan	1/28
Arnie	Hastings	1/28
Robert	Abersold	1/28
Dallas	Crosley	1/28
Robert	Tanner	1/29
Linda	Metzger	1/29
Sophia	Cowan	1/29
Betty Jo	Burke	1/30
Louise	Keyack	1/30
Christine	Kibler	1/30
James	Arthur	1/30
Amelia	Wolf	1/30
Tom	Woodard	1/31
Craig	Dunning	1/31
Matthew	Lichtsinn	1/31

Larry & Beverly	Mueller	1/22/1949
Richard & Audrey	Jung	1/14/1956
Floyd & Louise	Longlet	1/7/1961
Kent & Diane	Dugstad	1/12/1961
William & Barbara	Niemeyer	1/31/1966
Jerry & Gloria	Anderson	1/28/1967
Dale & Leslie	Pettis	1/20/1968
Andrew & Donna	Kerr	1/27/1973
Ronald & Cheryl	Schaab	1/23/1976
Larry & BJ	Schuller	1/1/1977
Mark & Linda	Krueger	1/15/1977
Leonard & Lois	Vostrejs	1/1/1983
Jerry & Joan	Letnes	1/26/1991
Sheila & Mike	Hurst	1/25/1995
Craig & Elizabeth	Dunning	1/6/1996
John & Sharon	Tarvin	1/3/1998
Augustine & Tracie	Padilla	1/16/1998
Jill & Ramon	Lopez	1/3/2003
Robert & Kristen	McLean	1/16/2005