

February 2021



# RISEN SAVIOR

## LUTHERAN CHURCH

23914 S. Alma School Road | Chandler, AZ 85248  
Church Office 480.895.6782 | School Office 480.802.1505  
[www.rslcs.org](http://www.rslcs.org) | [facebook.com/rslcs](https://facebook.com/rslcs) | @RSLCS | @RisenSaviorAZ

**Rev. Ron Burcham**  
Senior Pastor  
[Ron.burcham@rslcs.org](mailto:Ron.burcham@rslcs.org)

**Rev. Mark Hoffmann**  
Associate Pastor of  
Congregational Care  
[Mark.hoffmann@rslcs.org](mailto:Mark.hoffmann@rslcs.org)

**Joel Endicott**  
Director of Worship  
[Joel.endicott@rslcs.org](mailto:Joel.endicott@rslcs.org)

**Susan Mello**  
Director of Operations  
[Susan.mello@rslcs.org](mailto:Susan.mello@rslcs.org)

**Linda Pauley**  
Director of Early  
Childhood Education  
[Linda.pauley@rslcs.org](mailto:Linda.pauley@rslcs.org)

## NORTH BUILDING DEDICATION

SUNDAY, FEBRUARY 7, 2021

8:30 AND 10:30 AM

BOTH SERVICES LIVESTREAMED

Two identical 75 minute services featuring traditional and contemporary music, special recognitions, and a chance to tour the building after each service.

- North Building Dedication Page 2
- Ash Wednesday/Lenten Page 2
- ACSTO Page 5
- Baptisms Page 6
- Financials Page 12-14

# WORSHIP

## NORTH BUILDING DEDICATION

SUNDAY, FEBRUARY 7, 2021

8:30 AND 10:30 AM

BOTH SERVICES LIVESTREAMED

Two identical 75 minute services featuring traditional and contemporary music, special recognitions, and a chance to tour the building after each service.

For those of you who received a "white rock" at the Groundbreaking Ceremony back in 2019, please bring it with you to the North Property Dedication for a special placement.

## Drive-Thru Communion

February 21 at 12:15 pm in the North Parking Lot.

Following the 11:00 am service, the elements will be consecrated. Please enter the parking lot from Oakwood Blvd. and follow the directions from the parking attendants. The sacrament will be offered, one of the Pastor's will offer a blessing, you will have an opportunity to drop off your "Give" envelope and to receive a copy of News & Notes. Exit onto Chandler Heights Rd. Everyone is welcome!

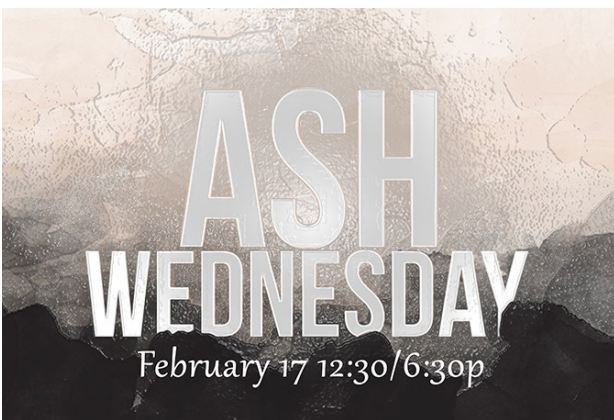
## NEW SERVICE TIMES RESUME FEBRUARY 14

### Sunday Worship Services

In-Person at 8:00 am & 11:00 am – Traditional Worship in the South Building Sanctuary

In-Person at 9:30 am – Contemporary Worship in the North Building Worship Center

Livestream at 8:00 am and 9:30 am via [rslcs.org](http://rslcs.org)



### Ash Wednesday

The season of Lent begins on Ash Wednesday, February 17. It is a day to remember that from the dust of the earth we came and to dust we will return, until we are resurrected on the last day when Christ returns. We will have Worship services at 12:30 pm/6:30 pm in the North Building Worship Center.

Livestream will be available for the 6:30 pm service.

Drive-Thru Communion will be at 1:45 pm in the North Parking Lot.

### Lenten Service Schedule

All services will be held in the South Building Sanctuary.

Livestream is available at 6:30 pm via [rslcs.org](http://rslcs.org).

Lenten Service	February 24	12:30 pm/6:30 pm
Lenten Service	March 3	12:30 pm/6:30 pm
Lenten Service	March 10	12:30 pm/6:30 pm
Lenten Service	March 17	12:30 pm/6:30 pm
Lenten Service	March 24	12:30 pm/6:30 pm

# CONNECT

## Church Office Hours

Monday-Thursday 8:00 am—4:00 pm  
Fridays 8:00 am—12:00 pm



To listen to Lutheran Hour Ministries weekly program: Visit their website at [lhm.org](http://lhm.org); Scroll down on the webpage to “This week on TLH”, then scroll further to “Listen Now” and enjoy daily devotions and the broadcast each week.

## SUNDAY PARKING

Don't forget that there is additional parking available at the Administration Office and we have approval to use the Safeway parking lot.

### Landscape Ministry

This group meets Thursdays at 6:00 am for fellowship and to care for the church campus grounds. Contact Chuck for more information [cmdeuth1@gmail.com](mailto:cmdeuth1@gmail.com).



## Join Women's Ministry on Facebook

All women are invited to join this private group on Facebook. This is a place where women can connect, support and do life together. This month we will focus on “God's Love”.

You can find this group under our RSLCS Facebook page “Groups”, “Women's Ministry”.

Contact Annie for details at [womensministries@rslcs.org](mailto:womensministries@rslcs.org).

## Announcing Our New Facility Manager—David Knutson

We are pleased to announce that David Knutson has joined our team as our full-time Facility Manager. David comes to us with many years of experience in a Church as well as Corporate Facility Management and has a true heart for Ministry. We are confident that David will be a great addition to our staff.

A year ago, Chuck Deuth graciously stepped in as our Acting Facility Manager after Bill Pauley was injured saving the Administration Building from further damage in the flood of 2019. Bill has since retired and we are so grateful for his years of dedicated service to Risen Savior. Thank you Bill!


Chuck will continue working full-time during the transition. After that, Chuck will be staying on staff in a part-time capacity to assist with our ever growing campus.

JOIN US FOR  
COFFEE AND DONUTS  
BETWEEN SERVICES

ITS A GREAT WAY TO  
CONNECT WITH OTHERS

Donuts will be back February 14!





**Mondays 10:00 - 11:30 am**  
**Starting January 11**

GriefShare is a weekly seminar/support group for those experiencing the loss of a loved one or if you or a loved one are experiencing a terminal illness.

Whether your loss is recent or in the past, you will receive valuable information about facing your new, normal life and renewing your hope for the future.

*Please call the Church Office to register: 480.895.6782*

*This group will meet each Monday through March 22.*



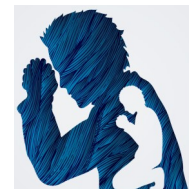
*What Do Stephen Ministers Do?* Answer: Express Christ's care for others. They distinctively bring Christian care to those in need. They express Christ's care for others by listening and comforting, calling on their training and employing the tools of faith. Contact Pastor Mark at [mark.hoffmann@rslcs.org](mailto:mark.hoffmann@rslcs.org) for more information.



## Prayer Warriors

Wednesdays at 9:30 am in  
The Perfect Place.

If you have a passion for talking to the Lord in prayer or lifting up those who need physical, emotional or spiritual support, join us on Wednesdays! Contact Joan at [mandjscott@cox.net](mailto:mandjscott@cox.net) with any questions and to RSVP for social distancing.



### TO PLACE A PRAYER OR VISIT REQUEST:

- † Submit a prayer request by filling out a Prayer card found in the pews and place it in the offering plate or email [prayers@rslcs.org](mailto:prayers@rslcs.org). Prayers remain on the list for 4 weeks, unless an update is provided.
- † To have someone pray with you by phone or in person, email [prayerwarriors@rslcs.org](mailto:prayerwarriors@rslcs.org).
- † To notify the church of a surgery or hospitalization, please email [visits@rslcs.org](mailto:visits@rslcs.org). Please include the facility and contact number.
- † After hours that need a timely response by a Pastor, please call 480.895.6782 Ext. 120 and leave your name and phone number.

## ONLINE PRAYER MEETING

Tuesdays at 9:00 am via Zoom

Join us for this new, ongoing experience of meeting for prayer online. We'll follow a written liturgy of prayer and scripture, and take personal prayer requests as well. The link to the prayer meeting can be found on the home page of our web site: [www.rslcs.org](http://www.rslcs.org) and click on "Online Meetings"

Questions? Contact Dave at [dave.klampert@rslcs.org](mailto:dave.klampert@rslcs.org)



## ANSWER Continued...

---



Arizona Christian School Tuition Organization

If you're an Arizona taxpayer, you can make a donation to ACSTO and **receive a dollar-for-dollar state tax credit** in return! But what does that mean?

At the end of the year, if you typically get a refund, you'll get a bigger refund. If you typically owe, you'll owe less.

This is because a tax credit is different than a normal charitable deduction—rather than reduce your taxable income, **it directly reduces your state tax liability** (a.k.a. the tax you pay). For example, if your tax liability (obligation) is \$1,000, and you make a \$750 donation to ACSTO, your liability will be reduced by \$750—meaning that your tax liability will only be \$250! **Keep in mind, if you usually receive a refund, a tax credit makes it bigger—it is to your advantage to participate in this program.**

In addition, you can make a donation all the way up until **April 15** (your donation must be made prior to filing your taxes—if you are filing an extension your donation needs to be made by April 15), and **still claim the credit for the previous tax year!**

The best part? ACSTO uses your tax credit donation to award tuition scholarships to Christian School students attending one of our Partner Schools! **When you make a donation, you can identify a specific school, or even recommend a specific student to be considered for a scholarship!**

Because of your support, thousands of families, who otherwise couldn't, have been able to afford Christian Education—none of this is possible without you!

What are you waiting for? More than 85,000 Arizona taxpayers have already joined us to make Christian Education affordable for 38,000 students! Point the way for Arizona students today!

### APRIL 15 DEADLINE

Donations can be mailed or submitted online to ACSTO prior to filing taxes, but no later than April 15 (whichever comes first), and still be eligible for the tax credit for the previous tax year. For any donations made between January 1 and April 15, it is up to the donor to determine which tax year they will claim the donation. Donations must be postmarked or submitted online by midnight of April 15—even if you plan on filing an extension. Arizona law allows donors to recommend a student when making their donation, however, a recommendation is not a guarantee of a scholarship award.

PO Box 6580  
Chandler, AZ 85246  
480.820.0403  
ACSTO.org

# ANSWER Continued...



## Hooks and Needles Ministry Update

Tuesdays from 10:00 am—12:00 pm in the Fellowship Hall.

*Starting February 23, this group will meet in the South Administration Conference Rm.*

We are practicing social distance by having each person at their own table wearing a mask. Hand sanitizer and masks are available. Please join us. If you are still not comfortable in coming you are more than welcome to drop off your strips to be sewn into blankets, and/or pick up yarn. We will also be accepting donations of yarn to make afghans to donate to the Salvation Army.



## Piece Maker Quilters-RSVP

Two Sessions on Wednesday's in the Fellowship Hall.

First session is from 9:00 am - 12:00 pm and second session is 1:00 pm - 4:00 pm.

Wednesdays you can still find us splitting into two groups so we can continue social distancing/mask wearing. If you are interested in joining us, please call Sandra Devine so we can keep the groups small.

Always check the weekly News & Notes should any changes in our meetings times and dates occur. Contact Sandi 480.202.5772 or Barb 602.565.7137 with any questions.

## Braille Update

Due to COVID-19 numbers increasing in Arizona, we do not plan to begin meeting this month. Please keep an eye out for future updates.



We are looking for volunteers to run the tech booth on Sundays. If you are interested in learning more, contact Joel at [joelendicott@rslcs.org](mailto:joelendicott@rslcs.org) with questions.



## Free Life Planning Assistance

Do you have questions regarding your will, trust or gift planning? It's something most of us put off even though our circumstances are constantly changing. We provide a FREE service to assist with your life planning needs. Contact the Church Office for more information 480.895.6782.

# ANSWER Continued...

## VISITATIONS

If you or someone you know would like a visitation, please notify the church of a surgery, hospitalization or other care emergency by emailing [visits@rslcs.org](mailto:visits@rslcs.org). Please include the facility and contact number.



## Lutheran Social Services of the Southwest

Showing kindness, doing justice and serving those in need, we are located statewide and serve 10 counties across Arizona. Arizona non-profits do many things well that make this state a better place to live but we do this with the support of many partners. You are the rock stars. Thanks for creating the kind of community God envisions for Arizona. To learn more about the work of LSS-SW, please visit their website and subscribe to their e-newsletter, [www.lss-sw.org](http://www.lss-sw.org).

## Ways to Give Each Week

**Text to Pay** - Text the amount you'd like to give to 855.946.1637. You'll receive a text reply with a link to complete the transaction.

**E-Give** – Click on the “Give” link at the top of the Home page on the website, [rslcs.org](http://rslcs.org) and follow the directions.

**Mail** – Send your check payments to: RSLCS 23714 S. Alma School Rd., Chandler, AZ 85248

**Give In-Person** Place your check or cash in a “Give” envelope and drop in a Giving box on Sundays.



## Align Your Investments with Your Personal Values

Lutheran Church Extension Fund (LCEF) empowers ministries to share the Gospel and build God's Kingdom through Word and deed. An investment with LCEF puts your blessings from God to work for ministries, supporting what you value most. Making disciples is something we all can share through the LCEF ministry. There are a variety of LCEF investments to suit your needs. Find more information at [lcef.org](http://lcef.org) or call 800.843.5233.

## PACE Assistance

Seniors, if you are looking for information regarding transitioning into Independent or Assisted Living, contact PACE (People, Access, Community), at 480.246.3515. They will help you make informed decisions and their housing directory will help you narrow your options to make the process easier. You can also find them on the internet at [www.seniorhousing.org](http://www.seniorhousing.org).

## Care Ministry Meeting

February 16 at 4:00 pm in the Fellowship Hall.

Join us as we resume our meetings.

For more information on this ministry, contact Pastor Mark at [mark.hoffmann@rslcs.org](mailto:mark.hoffmann@rslcs.org).

Facebook: [facebook.com/rslcs/](https://facebook.com/rslcs/)

Twitter: @RSLCS

Instagram: @RisenSaviorAZ





## ANSWER Continued...

---



### ACTIVE DUTY MILITARY PERSONNEL

We would like to acknowledge and pray for all active duty military personnel associated with RSLCS. Please contact us on the prayer request line [prayers@rslcs.org](mailto:prayers@rslcs.org), a pew card or by phone with their names. Please include an address so we can send a card. Names are posted in the display case outside to the left of the Sanctuary. The Service flag is an official banner authorized by the Department of Defense for display by families who have members serving in the Armed Forces during any period of war or hostilities the United States may be engaged in.



### Sunday Ministry Partner Sign-up Process

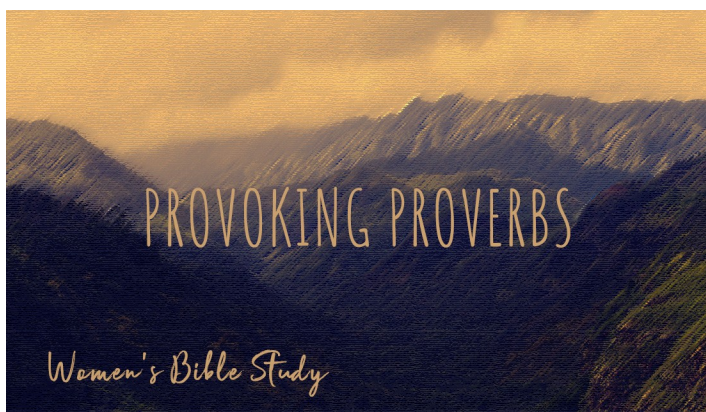
Our Sunday morning Service Team Leader positions are scheduled through Planning Center. We are using a tool in Planning Center called "Sign-up-Sheets". Rather than the office scheduling, now you will be able to choose which Sundays/services you'd like to serve.

At the beginning of each month you will receive an email asking you to select which Sundays you would like to serve. These dates will be saved in your Planning Center account and you'll receive reminder emails as the date approaches.

We know that some of our married couples that use Planning Center share the same email address. If you do, here's what we need ONE of you to do: (One of you may keep your current password, but the other needs to create a new one). Enter the link to get to the sign-in page of Planning Center at <https://accounts.planningcenteronline.com>. Type in your email address and click the checkmark button. Remember, if you share an email address with another Planning Center user, you must keep track of which account you're accessing when you are signing up or making changes to your schedule.

For more details on how to get more involved, see the bottom of the website home page. There is a short video to assist you in how to sign-up. Contact the Church Office with any additional questions.

## WOMEN'S MINISTRY



### Women's Evening Bible Study

February 9 & 23 in The Perfect Place—RSVP.  
This study meets the 2nd and 4th Tuesdays of the month. We are continuing to study Provoking Proverbs (Wisdom and the Ten Commandments) written by Pastor David Coe. Please contact Ruth Ann Endicott 480.393.3801 if you plan to attend.



### Women's Online Study

Wednesdays at 9:30 am via Zoom - RSVP  
Join us weekly or follow along with the video instructions provided. Be sure to RSVP for this study, contact Annie at [womensministries@rslcs.org](mailto:womensministries@rslcs.org). Invite a friend!



### LWML Business Meeting

February 11 at 1:00 pm in The Perfect Place.  
All women are welcome to join us for fellowship and Bible Study.

### School Backpack Mission

Drop-off items in the Narthex and the Lobby until February 14.

The women of the LWML have the opportunity to supply backpacks filled with school supplies, small sized balls and new socks. The packs will then be distributed to people in our Pacific Southwest District and the 1000 Generation ministries in Mexico. We would like to give Risen Savior people the chance to contribute to the backpacks. Thank you for your generosity.

**Mission Updates:** A Mission Grant of \$98,400 is being given to Music Outreach, Classes and Resources on the border. This is happening at Ysleta Lutheran Mission Human Care, El Paso, Texas. Please pray for all LWML Mission Grants that they will impact people around the world for Christ.

### Women's In-Person Bible Study—James

Thursday's at 9:00 am in The Perfect Place.  
Join us in-person, weekly for this Bible Study: James, a study from Concordia Publishing House. RSVP for a copy of the study, contact Annie at [womensministries@rslcs.org](mailto:womensministries@rslcs.org) with any questions. All women are welcome!



# DEVELOP Continued...

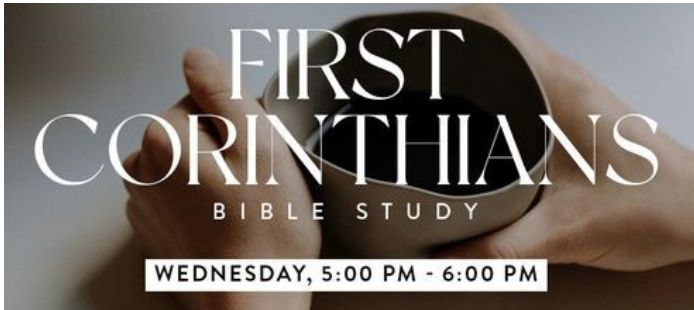


## Early Childhood Center (ECC)

Our ECC is always available for tours.  
Contact Jeanne with any questions  
480.802.1580 or  
do a virtual tour online at  
[www.risensaviorpreschool.org](http://www.risensaviorpreschool.org).

February 13 & 27  
at 7:00 am in  
The Multi-Use Room.  
This group meets twice  
a month on the 2<sup>nd</sup> and  
4<sup>th</sup> Saturdays, for Bible  
study and fellowship.  
Contact Chuck at  
480.766.3626 or  
[cmdeath1@gmail.com](mailto:cmdeath1@gmail.com)  
for more information.

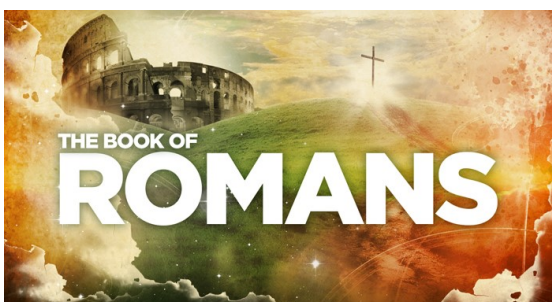
# MEN'S EARLY BIRD BIBLE STUDY



In-Person: Wednesdays at 5:00 pm in The Perfect Place OR Online: Thursdays at 10:00 am via Zoom. Everyone is welcome to join us. Contact Pastor Mark at [mark.hoffmann@rslcs.org](mailto:mark.hoffmann@rslcs.org) with any questions.

## Sermon Archive

If you are unable to join us for livestream worship at the times available, don't forget that the entire sermon is uploaded after 1:00 pm the same day. Simply visit [rslcs.org](http://rslcs.org) under "Sermon Archive" and all previous services are available to view at your convenience.



## Maricopa Bible Study - Romans

Mondays at 6:30 pm in Maricopa – RSVP.

This group will be meeting weekly on Mondays to study Romans. Anyone interested should RSVP to Linda at 480.452.8980.



## DEVELOP Continued...

# Youth and Teen Information!

~No Youth Meetings February 7~



### JAM! Pre-Confirmation (Age 3- Grade 6) - **UPDATED**

Sundays at 9:30 am in the North Building, Sign-in at the Kiosk in the Lobby.

**Pre-Confirmation:** This program is a rotating two-year pre-confirmation class that will focus on the old and new testaments. Pre-confirmation is a time for students to begin the discussions about their faith and prepare for the coming years of study in Ignite/Confirmation. Join us for our series: "Subscribe Now".



### Ignite Confirmation (Grades 7-8) - **UPDATED**

Sundays 6:00 pm in the North Building Room 107.

These meetings consist of weekly bible studies, interactive games and socialization. Join us as we continue the Old Testament.



### Impact (Grades 9-12) - **UPDATED**

Sundays at 7:00 pm in the North Building Room 108.

These students will participate in positive, encouraging, and faith-focused activities where relationships continue to grow and thrive. Throughout the year, Impact youth will have opportunities to lead and volunteer in our church, our community, nationally and globally. Join us for our series: Goals.

Follow the Kids on Instagram and Facebook: [@RSLCSKids](#)

Follow the Youth on Instagram and Facebook: [@RSLCSYouth](#)

*These are private social media pages for the Youth and Parents.*

## Online Services

If you are unable to view livestream worship at the times available, don't forget that the entire sermon is uploaded the same day. Visit [rslcs.org](#), under 'Sermon Archive' to find previous services.

**We are the newest  
member of the  
Chandler Chamber  
of Commerce!**

Risen Savior Lutheran Church  
Proud Member of



# Risen Savior Monthly Financial Review

---

The following is a summary of financial activity for Risen Savior Lutheran Church. If you would like more detailed reports, please contact our Business Manager, Susan Mello at [susan.mello@rslcs.org](mailto:susan.mello@rslcs.org).

Did you know?

IT'S NOT TOO LATE!

You can help a child receive a Christian education at no cost to you.



The Arizona Christian School Tuition Organization (ACSTO) and the Arizona Lutheran Scholarship Organization (ALSO) have merged.

If you pay Arizona state income taxes, you can make a donation to ACSTO/ALSO and claim the amount you give as a dollar-for-dollar tax credit that lowers your bill. There is no out of pocket cost to you. Please go to: [www.acsto.org](http://www.acsto.org) to make your donation. ***Remember to list Risen Savior Lutheran School as your recommended school.*** These funds will directly impact our Kindergarten Class here at Risen Savior.

## Paycheck Protection Loan

As you may recall, Risen Savior Lutheran Church applied for and was granted a Paycheck Protection Loan earlier this year. On December 17, 2020, we received word from our Bank and the Small Business Administration that ***our loan has been forgiven in full.*** The impact of this is included in the December and year end results.

This is such a blessing to the ministry at Risen Savior and we give all the glory to God for this amazing gift!

## Financial Summary for December 2020 and Calendar Year End 2020 (CYE20):

### Giving Results

Giving was ***under*** budget by (\$9,661) for the month of December and ***under*** budget by (\$116,936) CYE20.

For CYE20, we are at 92% of the budget for Giving. This shortfall is predominantly in Loose Plate giving.

### Spending

Spending was ***under*** budget by (\$12,564) for the month of December and ***under*** budget by (\$243,130) CYE20.

The Preschool has underspent due to control over variable costs such as food and labor that has been impacted by lower enrollment.

The Church has put controls in place to monitor expenses and adjust as needed based on Giving.

In light of the decrease in Giving and Preschool Revenue, we continue to monitor expenses and limit based on necessity.

# Risen Savior Financial Review Continued...

## Preschool and Kindergarten (PS&K)

PS&K Net Income was **over** budget by \$4,835 for the month of December and **under** budget (\$128,055) CYE20.

Current enrollment at the Preschool is approximately 90% of pre-COVID rates. We have opened previously closed classrooms to fulfill the need and allow for future growth.

## Net Operating Cash

As of December 31, 2020, Operating Cash is a **positive** \$124,531, which is an increase of \$334,967 from the end of November.

This includes a positive impact of \$325,422 from the proceeds from the Paycheck Protection Program.

This positive Operating Cash will be funded as savings for the future as determined by the Governing Board.

## Our "Next Step" Capital Campaign Update

Total Pledged: \$4.2M

Contributions as of 12.31.2020: \$\$3.1M

## Paycheck Protection Program (PPP) Round 2

Risen Savior, based on our financial performance and continued financial uncertainty, has qualified to apply for a 2<sup>nd</sup> PPP loan.

On January 15, 2021 an application was submitted to the bank for \$300,970. The application is currently under review and we anticipate it being forwarded to the SBA by January 29, 2021.



# Risen Savior Financial Review Continued...

	Dec	Dec	\$ Over	CYE20	CYE20	\$ Over	Annual
	Actual	Budget	Budget	Actual	Budget	Budget	Budget
Giving	156,049	165,710	(9,661)	1,418,824	1,535,760	(116,936)	1,535,760
All other income	325,475 *	4,270	321,205	341,646 *	50,800	290,846	50,800
<b>Total Church Income</b>	<b>481,524</b>	<b>169,980</b>	<b>311,544</b>	<b>1,760,470</b>	<b>1,586,560</b>	<b>173,910</b>	<b>1,586,560</b>
Preschool & Kindergarten	78,964	95,600	(16,636)	868,620	1,170,355	(301,735)	1,170,355
<b>Total Operational Income</b>	<b>560,488</b>	<b>265,580</b>	<b>294,908</b>	<b>2,629,090</b>	<b>2,756,915</b>	<b>(127,825)</b>	<b>2,756,915</b>
<b>Operational Expenses</b>	<b>211,846</b>	<b>224,410</b>	<b>(12,564)</b>	<b>2,379,810</b>	<b>2,622,940</b>	<b>(243,130)</b>	<b>2,622,940</b>
<b>Net Income/(Loss)</b>	<b>348,642</b>	<b>41,170</b>	<b>307,472</b>	<b>249,280</b>	<b>133,975</b>	<b>115,305</b>	<b>133,975</b>

\* Includes the impact of the Paycheck Protection Program proceeds in the amount of \$325,422

High Level Statement of Operational Cash	
December 30, 2020	
Cash/Receivable Balance 12.31.20	1,226,322
Liabilities	1,333
Restricted Assets	498,971
Unrestricted Assets	
Designated Savings	453,808
Designated Programs	147,679
Total Unrestricted Assets	601,487
Net Operational Cash 12.31.20	124,531 *
Cash/Receivable Balance 11.30.20	953,478
Liabilities	(1,200)
Restricted Assets	606,678
Unrestricted Assets	
Designated Savings	409,895
Designated Programs	148,541
Total Unrestricted Assets	558,436
Net Operational Cash 11.30.20	(210,436)
Net Operating Cash Change	334,967



Verla	Matuschka	2/1	Heather	Knierp	2/10
Gertrude	Harmening	2/1	Mason	Hickel	2/10
Marcy	Pietrek	2/1	Gordon	Hagg	2/11
Vance	Best	2/1	Sharon	Turgeon	2/11
Barbara	Buttleman	2/1	Rachelle	Wright	2/11
David	Boshears	2/1	Mckenna	Loop	2/11
Stephen	Jacusic	2/1	Robert	Connors	2/11
Cameron	Cable	2/1	Grace	Stark	2/11
John	Neff	2/2	Andrew	Fauth	2/12
Kodyn	Wolf	2/2	Donald	Nelson	2/13
Tawnya	Edwards	2/3	Kenneth	Poulsen	2/13
Joel	Lissy	2/3	BJ	Schuller	2/13
Natalie	Musa	2/3	Willard	Pedersen	2/14
Walter	Potthoff	2/4	Margaret	Bergendahl	2/15
Janet	Pfahl	2/4	Linda	Peiffer	2/15
Russ	Warner	2/4	Peyton	Stark	2/15
Kathleen	Miller	2/4	Trudy	Alexander	2/16
Emma	Loop	2/4	Ellen	Voelker	2/16
Caleb	Evans	2/4	Rosemary	Langley	2/16
Sharon	Becker	2/5	Kaston	Bell	2/16
Victor	Jimenez	2/6	Marsha	Duffield	2/17
Kylie	Correll	2/6	Margaret	Boshears	2/17
Connor	Correll	2/6	Isaac	Stark	2/17
Sandra	Devine	2/7	Clifford	Clements	2/18
Thomas	Korpalski	2/7	Renee	Murphy	2/18
Sue	Strauch	2/7	Bernadine	Herbeck	2/19
Jim	Ditter	2/7	Kenneth	Newell	2/19
Susan	Mello	2/7	Lisa	Spivey	2/19
Ashley	Jacusic	2/7	Brandon	Stevens	2/19
Savannah	Steiner	2/7	Kelly	Hahn	2/19
Larry	Scheer	2/8	Jason	Buchanan	2/20
Kathy	Kennedy	2/8	Ryan	Long	2/20
Harry	Folkvord	2/9	Nancy	Bryant	2/21
Sara	Bennerotte	2/9	David	Nolan	2/22
Bonnie	Pettit	2/9	Judy	Hayes	2/23
John	Lasiter	2/9	Kristin	Zeller	2/23
Ted	Tollefsen	2/10	Kevin	Milne	2/23
Walter	Ruch	2/10	Marie	Kiehl	2/24
Marv	Wellik	2/10	Richard	Kuhlman	2/24
Carol	Dawley	2/10	Hans	Clef	2/24



Heather	Chase	2/24
Tonee	Lopez	2/24
Mark	Hoffmann	2/25
Gary	DuBois	2/26
Cristy	Wellik	2/26
Robin	Robertson	2/27
Bristol	Knoll	2/27
Barbara	Bade	2/28
Kenneth	Krupp	2/28
Christian	Wellik	2/28
Jacob	Adamovic	2/28
Audrey	Lorentz	2/29



Wayne & Heather	Chase	2/16/1957
Hans & Billie	Clef	2/20/1959
Lee & Diane	Bergelin	2/4/1961
Marv & Kay	Wellik	2/27/1965
Anthony & Barbara	Fox	2/4/1967
Beverly & Robert	Jur	2/14/1970
Austin & Elaine	Culp	2/5/1972
David & Nancy	Klampert	2/14/1975
Charles & Judith	Bell	2/27/1981
Elizabeth & Thomas	Leonard	2/19/1983
David & Rachelle	Wright	2/14/1987
Kenneth & Ann	Krupp	2/6/1999
Shannon & Jennifer	Miller	2/2/2002
Bob & Marge	Brower	2/14/2004
Matthew & Rebecca	Derr	2/29/2004
Jessica & Brian	Irick	2/10/2012