

April 2022



RISEN SAVIOR

L U T H E R A N C H U R C H

23914 S. Alma School Road | Chandler, AZ 85248
Church Office 480.895.6782 | School Office 480.802.1505
www.rslcs.org | facebook.com/rslcs | @RSLCS | @RisenSaviorAZ

E A S T E R
Services

Saturday, April 16
5:30 pm Worship Center
*There will be a Scavenger Hunt During Service
for Ages 6th Grade and Under (Multi-Use Rm)*

Sunday, April 17
6:30, 8:00, 11:30 am Sanctuary
9:00, 10:30 am Worship Center

Rev. Ron Burcham
Senior Pastor
Ron.burcham@rslcs.org

Susan Mello
Director of Operations
Susan.mello@rslcs.org

Rev. Mark Hoffmann
Associate Pastor of
Congregational Care
Mark.hoffmann@rslcs.org

Linda Pauley
Director of Early
Childhood Education
Linda.pauley@rslcs.org

Joel Endicott
Director of Worship
Joel.endicott@rslcs.org

Jill Lopez
Director of NextGen &
Family Ministry
jill.lopez@rslcs.org

WORSHIP

Sunday Worship Service Times (Easter services below)

8:00 & 11:30 am – Traditional Worship in the Sanctuary

9:00 & 10:30 am – Contemporary Worship in the Worship Center

Livestream at 8:00 and 10:30 am via YouTube or rslcs.org.

Communion is served the 1st, 3rd and 5th Sundays of the month and every Sunday at the 11:30 am service.



Upcoming Services

Lenten Services

April 6 at 12:30 pm/*6:30 pm in the Sanctuary.

Palm Sunday, April 10 Regular Service Times (see above).

Maundy Thursday, April 14 at 12:30/*6:30 pm in the Worship Center.

Good Friday, April 15 at 12:30/*6:30pm in the Worship Center.

Easter Services:

April 16 at 5:30 pm in the Worship Center (children's Easter activities available).

April 17 *6:30/*8:00/11:30 am in the Sanctuary.

April 17 9:00/*10:30 am in the Worship Center.

*Livestream

Easter & Sunday Parking

Don't forget that there is additional parking available at the Administration Building and we have approval to use the Safeway parking lot for Sunday service overflow. Also, if you are able to walk a little further, it would be kind of you to leave the front handicapped spots open for those with limited mobility.

CONNECT



Women's Ministry Muffins, Coffee & Guest Speakers

Look for speaker details in the weekly News & Notes.

April 7

Christina Lombardo, Health Coach
"Top Lifestyle Practices for Better Health-The Good and the Misunderstood".

April 14

Kate Miraglia

April 21 (No Meeting)

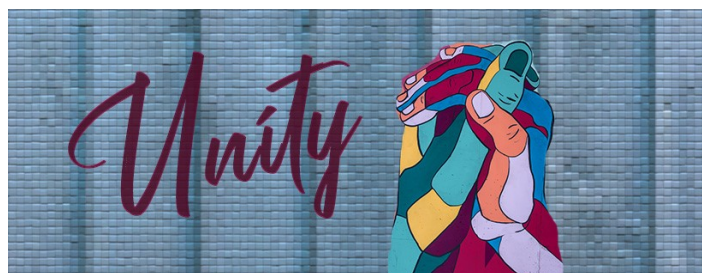
April 28

Elena Porter

Please rsvp to Annie Wolf at anniewolfchandler@gmail.com for materials.

Did You Know??

It takes over 130 volunteers to give their time and talent to make a Communion Sunday successful! We are so thankful to have amazing volunteers. If you are interested in getting more involved, contact the Church Office at info@rslcs.org.



Women's Ministry on Facebook

Do you crave community and connection?

Join the Risen Savior Women's Ministry Facebook page for "Unity" posts. We encourage one another to Connect with God, Connect with ourselves and Connect with one another. This Community is for women after God's heart. Join us today! You can find this group under the RSLCS Facebook page "Groups", "Women's Ministry". Contact Annie for details at anniewolfchandler@gmail.com.

Women's Weekly Lunch and Fellowship -RSVP

Thursdays, RSVP for Location/Time.

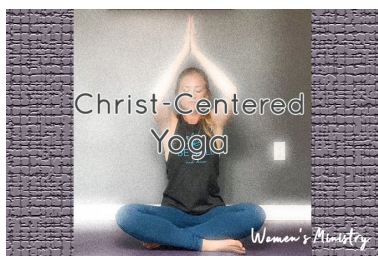
Join us every week for lunch and fellowship. RSVP to Annie at anniewolfchandler@rslcs.org for time and location.

CONNECT Continued...



What Are Stephen Ministers?

Stephen Ministers are laypeople trained to provide on-on-one, Christ-centered care. They have a compassionate heart for those who are hurting and they're equipped with caring ministry skills by their congregation's Stephen Leaders. Contact Pastor Mark at mark.hoffmann@rslcs.org for more information.



Women's Ministry Christ-Centered Yoga-RSVP

Mondays from 6:30 – 7:30 pm in NB Room 105
Nurture your body, mind, heart and spirit. Please RSVP as space is limited. Please bring a mat (if you have one) and wear comfortable clothing. RSVP to Dawn at dawn@inspiritusyoga.com.



Prayer & Praise Service and 24-Hour Prayer

May 5 at 9:30 am in the Worship Center.

This year we will be hosting a prayer service on our campus. This will be a short service with music and time to pray on campus. Following the service there will be coffee and fellowship. There will also be sign-up sheets available (starting April 24 in both the Narthex and the Lobby) to commit to the 24-hour prayer time. The goal is to have a full 24-hour timeframe of people committed to praying. This prayer time can be done anywhere (you do not need to come to the campus), it can be in the comfort of your home, office or park. Everyone is invited to participate. Contact Carolyn at cdawley210@gmail.com. Look for more details in the weekly News & Notes as the event date approaches.

Admin Building Office Hours

Office Closed April 18

M-Th 8:00 am—4:00 pm

Fri-8:00 am -12:00 pm

Active Duty Military Personnel

We would like to acknowledge and pray for all active duty military personnel associated with RSLCS. Please contact us on the prayer request line prayers@rslcs.org, a pew card or by phone with their names. Please include an address so we can send a card. Names are posted in the display case outside to the left of the Sanctuary. The Service flag is an official banner authorized by the Department of Defense for display by families who have members serving in the Armed Forces during any period of war or hostilities the United States may be engaged in.

Apostle Paul Tour

Scheduled for late September – early October of this Year.

This tour is led by Pastor Paul Frank of Hosanna Lutheran Church, Mesa, AZ. Join the adventure following the footsteps of the Apostle Paul through Greece and Italy. For tour information and a brochure contact Pastor Frank at pfrank@hosanna-lcms.com.

*Mark
Your
Calendar*



Children First Leadership Academy
Baskets of Love—Easter Candy
Now-April 13 Drop Off Donations in the Church Office.

Please donate Easter basket fillers (candy, small toys and goodies) to the Church Office or any Women's Ministry study for students in grades K-8.

Children First Leadership Academy—Tour the Facilities
May 12 from 8:45 am - 11:15am
RSVP for more details, we will depart from the North Building.

Braille Ministry
NO Meeting April 12
Tuesdays at 8:30 am in the Fellowship Hall.
If you would like more information, please contact Kay at



On this day, we recognize the work of our wonderful volunteers and dedicate our new 2022 van! Come enjoy refreshments and thank our amazing volunteers!
Thank you to our donors and sponsors!

YOU AND THE ENTIRE SUN LAKES COMMUNITY ARE INVITED TO JOIN US!
**NEIGHBORS WHO CARE
NEW VAN
RIBBON CUTTING &
VOLUNTEER
APPRECIATION
CELEBRATION**

Join US!
10:30 am
Wednesday, April 20
Risen Savior Lutheran Church
Parking Lot
23914 S Alma School Rd,
Chandler
FREE Refreshments!

NEIGHBORS WHO CARE, INC.
Celebrates and Wishes to Thank...
Several VERY Generous Individual Donors



Maricopa Bible Study: The Chosen

Mondays at 6:30 pm (RSVP for Address).

This study is about the book "The Chosen". Contact Linda for more details and to RSVP 480.452.8980.

ANSWER Continued...



Early Childhood Center (ECC)

Registration is open. Contact Jeanne with any questions 480.802.1580 or do a virtual tour online at www.risensaviorpreschool.org.

TO PLACE A PRAYER OR VISIT REQUEST:

- † Submit a prayer request by filling out a Prayer card found in the pews and place it in the offering plate or email prayers@rslcs.org. Prayers remain on the list for 4 weeks, unless an update is provided.
- † To have someone pray with you by phone or in person, email prayerwarriors@rslcs.org.
- † To notify the church of a surgery or hospitalization, please email visits@rslcs.org. Please include the facility and contact number.
- † After hours that need a timely response by a Pastor, please call 480.895.6782 Ext. 120 and leave your name and phone number.



Hooks and Needles Ministry

Tuesdays at 10:00 am in SB Room 110.

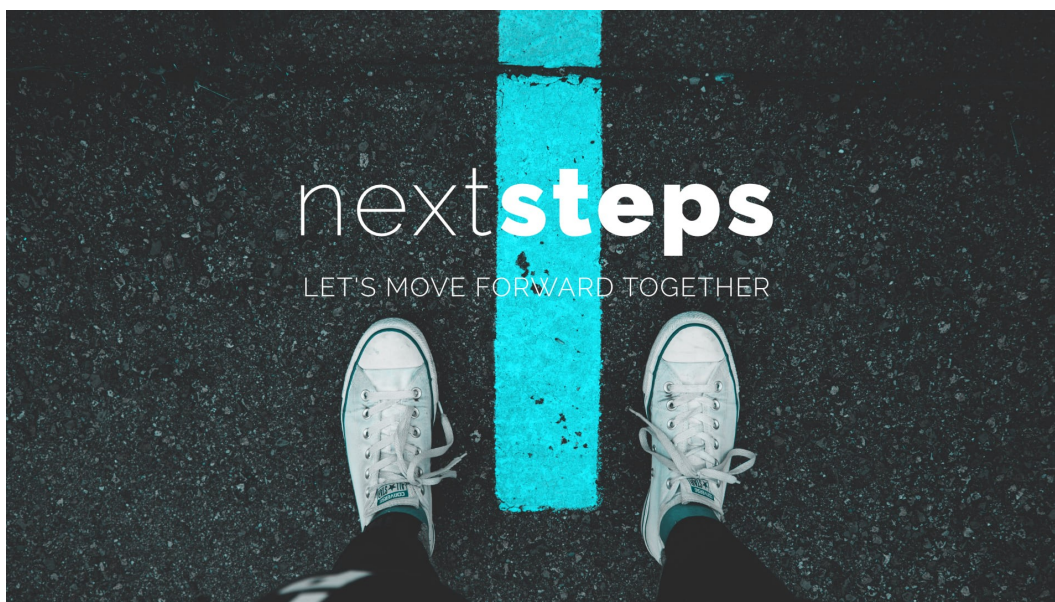
This group meets every Tuesday and all are welcome to attend. If you would prefer to work at home, patterns and instructions are available outside the Fellowship Hall, in the South Building, and/or in a drawer under the bed in the First Aid room in the North Building. If you need yarn or have any questions, please feel free to contact Marion at 602.920.3319.

Update: We have now donated over a 175 afghans to the homeless. Recently, eight afghans went to Project Hope Phoenix Salvation Army and 14 afghans went to the Chandler Salvation Army Corps. Hooks and Needles is now in desperate need of more yarn. Your yarn donations of 4-ply worsted yarn can be dropped off at the Admin Building. Monetary donations are of course, always welcome and can also be turned into the Admin Building too. Thank you in advance for your help.

Australia Tour

October 3-19

Risen Savior member, Dave Anderson, is leading a tour of 20 people to Australia. There will be four home-stays with Lutheran families. Contact Dave for information 480.838.8500.



ANSWER Continued...



Lutheran Social Services of the Southwest

Showing kindness, doing justice and serving those in need, we are located statewide and serve 10 counties across Arizona. Arizona non-profits do many things well that make this state a better place to live but we do this with the support of many partners. You are the rock stars. Thanks for creating the kind of community God envisions for Arizona. To learn more about the work of LSS-SW, please visit their website and subscribe to their e-newsletter, www.lss-sw.org.

Piece Maker Quilters

Wednesday's from 9:00 am - 12:00 pm
in the Fellowship Hall.

He is Risen! Easter blessings to you all!

In the last three months we gave away the following:

- 19 quilts to Child Crisis Arizona
- 21 quilts to My Sisters Place
- 26 quilts to Salvation Army
- 12 quilts to Time Out, Payson

God has blessed the Piece Makers group with many willing hands, donated material and sheets, and especially the prayers and support of members of Risen Savior. We welcome anyone who is interested in joining us! We meet every Wednesday. Jobs include ironing, cutting fabric, threading needles, joining quilt tops to batting and backings with yarn, and pinning edges to be machine sewn. We enjoy Christian fellowship and even a weekly snack! If you have any questions please call Barb 602.565.7137 or Sandi 480.202.5772.



ANSWER Continued...

Sunday Ministry Partner Sign-up Process

Our Sunday morning Service Team Leader positions are scheduled through Planning Center. We are using a tool in Planning Center called "Sign-up-Sheets". Rather than the office scheduling, now you will be able to choose which Sundays/services you'd like to serve.



At the beginning of each month you will receive an email asking you to select which Sundays you would like to serve. These dates will be saved in your Planning Center account and you'll receive reminder emails as the date approaches.

We know that some of our married couples that use Planning Center share the same email address. If you do, here's what we need ONE of you to do: (One of you may keep your current password, but the other needs to create a new one). Enter the link to get to the sign-in page of Planning Center at <https://accounts.planningcenteronline.com>. Type in your email address and click the checkmark button. Remember, if you share an email address with another Planning Center user, you must keep track of which account you're accessing when you are signing up or making changes to your schedule.

For more details on how to get more involved, see the bottom of the website home page. There is a short video to assist you in how to sign-up. Contact the Church Office with any additional questions.

RSLCS Foundation, Inc.: One Generation to Another

"One generation will commend your works to another; they will tell of your mighty acts." Psalm 145:4

As steward of your earthly God-given gifts and blessings, you may wish to include RSLCS Foundation in current financial planning, as well as a Beneficiary in your Estate Plan.

Ways to Give

- Gifts of cash, a heartfelt annual gift to bless Risen Savior Ministries
- Contributing a portion of your IRA Required Minimum Distribution (RMD)
- A Charitable Gift Annuity
- Gifts and Bequests from Wills and Trusts; a specific dollar amount, or gifting a percent of your estate's value or specifying a particular asset as the source
- Gifts of Real Estate, Stocks or Bonds, Life Insurance

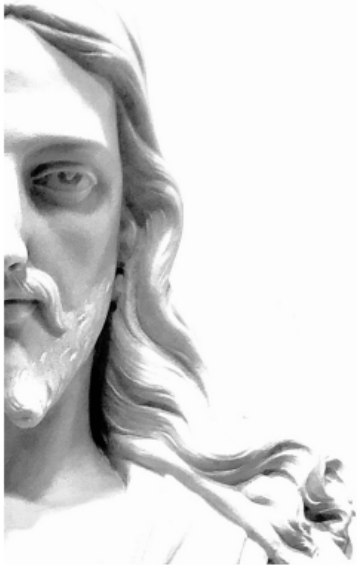
For more information, contact the Church Office at 480.895.6782.



Align Your Investments with Your Personal Values

Lutheran Church Extension Fund (LCEF) empowers ministries to share the Gospel and build God's Kingdom through Word and deed. An investment with LCEF puts your blessings from God to work for ministries, supporting what you value most. Making disciples is something we all can share through the LCEF ministry. There are a variety of LCEF investments to suit your needs. Find more information at lcef.org or call 800.843.5233.

THE RESURRECTION: empty faith or empty tomb?



join the discussion
SATURDAY 4/2 @ 10^{am}

Beautiful Savior Lutheran Church
1337 West 11th Street, Tempe



What can the historian determine about an event that happened 2,000 years ago? Learn about the remarkable historical evidence for the resurrection of Jesus of Nazareth and how you can share this evidence with the people around you.

SPEAKER: James Umber

Since 2008 James has taught students and adults at various churches and venues across Arizona. He earned his Master of Apologetics from Talbot at BIOLA. He is co-founder and speaker at Examined Life, an apologetics training ministry. He is also the chapter director for Ratio Christi, ASU Tempe, a student organization that encourages civil dialogue about the big worldview issues. James, his wife, and their daughter live in Phoenix, AZ.



Prayer Warriors

Wednesdays at 9:30 am
in the SB Library.

If you have a passion for talking to the Lord in prayer or lifting up those who need physical, emotional or spiritual support, join us on Wednesdays! Contact Joan at mandjscott@cox.net with any questions.

Landscape Ministry

This group meets Thursdays at 6:30 am for fellowship and to care for the church campus grounds. Contact Chuck for more information cmdeath1@gmail.com.

Adult Forum

No Meeting on Easter 4/17

Sundays at 9:15 am in the Fellowship Hall. Dr. Patricia Park will present, Integrated perspectives on Alzheimer's Disease from a Clinician, Christian, Wife, and Caregiver. Dr. Park is a certified Doctor of Nursing Practice and RSLC GriefShare leader. Dr. Park lost her husband to Alzheimer's at home during COVID-19 after a 16 progression.



**No Meetings During Lenten—
Study Resumes 4/20**

Gospel of Mark with Pastor Mark is Returning!

In-Person Starting April 20 on Wednesdays at 5:00 pm in SB Room 110 & Online Thursdays at 10:00 am via Zoom.

Join us to learn the miracle of the life of Jesus through His ministry. Everyone is welcome, contact mark.hoffmann@rslcs.org with any questions.

DEVELOP Continued...



April 9 & 23 NB Multi-Use Room at 7:30 am (doors open at 7:00 am).

Join us for our series "Gleanings from Ephesians: How to Live a Spirit-Filled Life" with speaker Dave Klampert. Doors open at 7:00 am for coffee, donuts and fellowship. Bible study will begin at 7:30 am. Feel free to bring a friend or fellow member, all men are welcome. Contact Chuck at 480.766.3626 with any questions.



The Quenched (by His Word) Women's Evening Bible Study: Provoking Proverbs

April 12 & 26 at 6:30 pm in the South Building Room 110.

Pages 109 - 115 will complete our study of the 7th Commandment. We will end the evening of study with taking our concerns to God in prayer. Contact Ruth Ann at steveabendicott@gmail.com with questions.

A flower chart binder is available in the South Building as you head towards the Fellowship Hall AND at the Welcome Desk in the North Building. Select an available date to remember a loved one or a special occasion. Sign-up to reserve your date, cost is \$40.00.



LWML will be on a break from meetings until the Fall.

Mite Box Collection

April 3 in the Narthex and Lobby– look for the table.

The goal for the current biennium is \$2,150,000. Feel free to deposit your mites in the Mite Box, which is on a table in both the Narthex and Lobby. Thank you for your participation.

LWML Mission

In Martin Luther's homeland and the nearby Czech Republic, most German and Czech people do not know Christ as their Savior. The Czech Republic is considered one of the most atheistic countries in the world. The Lutheran Church is striving to meet the urgent need to bring the love and light of Christ to people who have been living in spiritual darkness. This Mission Grant of \$56,000 is to help equip eight missionaries serving here.

Convention Information: "Treasured" is the theme of the PSW District LWML convention which will be held in Tempe June 3 - 5. Registration deadline is May 1.



DEVELOP Continued...

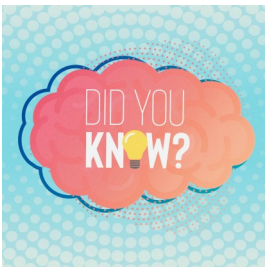
Youth and Teen Information

Nursery

Sundays during the 9:00 & 10:30 am services in the North Building.

Sunday School (Age 3-Grade 6) **No Meeting on Easter (April 17)**

Sundays at 10:30 am in the North Building, Sign-in at the Kiosk in the Lobby.



This month's series: Did you know that the largest Easter egg in the world lives in Vegreville, Canada? Did you know that the most popular Easter candy in the world is Reese's Peanut Butter Chocolate Eggs? There's a ton of fun trivia around the theme of Easter, but the best questions to ask kids are about Jesus. **Did you know we can love Jesus more than anything? Did you know Jesus is King over everything? Did you know Jesus is alive? Did you know we can trust Jesus?** Whatever their answer, invite kids to go beyond the facts and win the grand prize of knowing Jesus for themselves!

Children's Easter Fun!

April 16 at 5:30 pm in the Multi-Use Room.

All children ages 6th grade and under are invited to join the Easter fun! We will have a variety of activities for the kids while parents attend Easter Saturday service. Hope you join us!

VBS

"Monumental" Vacation Bible School is June 20 - June 24. This program is for ages 3 yrs-6th grade. More details coming soon.



Ignite Pre-Confirmation (Grades 7-8)

No Meetings on April 17 & 24

Sundays 6:00 pm in the North Building Room 107.

These meetings consist of weekly bible studies, interactive games and socialization.

Pre-Confirmation: This program is a rotating two-year pre-confirmation class that will focus on the old and new testaments. Pre-confirmation is a time for students to begin the discussions about their faith and prepare for the coming years of study in Ignite/Confirmation.

New Series: Apostles Creed

Join us for a two-week learning series on the Apostles Creed.

April 14 First Sacraments Celebration at 7:30 pm in the NB Multi-Use Room.

April 30 Confirmation Retreat at 8:00 am in the Youth Rooms.

Contact Jill at jill.lopez@rslcs.org for meeting details for any of our youth groups.

DEVELOP Continued...

High School Information

No Meetings April 17 & 24



Impact (Grades 9-12)

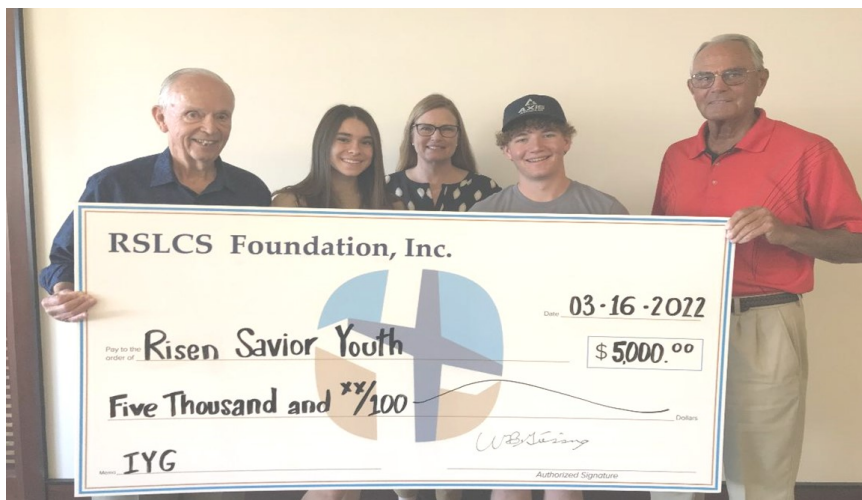
Sundays at 7:00 pm in the North Building Room 108.

This month's series: If you've ever gone hiking before, especially in the winter, you know that "breaking trail" is something you do when encountering deep snow that's tough to navigate. When that happens, one hiker usually goes ahead of their group and clears the way so others can follow behind more easily. A trail-breaker is someone who goes ahead, who makes a new way, and who invites others to follow along behind them. In so many ways, that's exactly what Jesus did for us. He broke a new trail just by existing, but he did much more than that. In this 6-week Easter series, we'll read the stories of Jesus breaking new trails as we discover that **Jesus never gives up on us, understands our pain, shows us love, is alive, can be trusted, and gives us a mission.**



IYG Meeting at 5:00 pm, April 24 in the Youth Rooms.

Contact Jill at jill.lopez@rslcs.org for meeting details for any of our youth groups.



Congratulations to our Youth Ministry on receiving a \$5,000 donation from the RSLCS Foundation to go towards summer IYG trip expenses!

Risen Savior Monthly Financial Review

Did You Know?

We are changing how we report on financials. On a monthly basis you will see a high level overview of the activities of the month that will include a comparison to the previous year. Then, on a quarterly basis, there will be a more in-depth look at the financials. If you desire more detail on a monthly basis, please contact our Director of Operations, Susan Mello at susan.mello@rslcs.org.

Monthly Financial Overview

Key Financial Indicators

	February 2022	Budget	Delta	February 2021	Delta
Operating Cash	(7,930)	NA	NA	13,268	(21,198)
Weekly Tracked Giving	33,980	37,625	(3,645)	30,761	3,219
Weekly Loose Plate	1,893	650	1,243	419	1,474
Net Income	(9,452)	(11,020)	1,568	71,171	(80,623)

Do You Give to the Church via Check?

If this is you, we are reminding all check writers to please use a black or blue ink pen on all handwritten checks so that our scanners will be able to read them. Thank you!

Ways to Give:

- ⇒ Cash—make sure to use an envelope with your name and/or giving number
- ⇒ Check
- ⇒ Website: www.rslcs.org/give
- ⇒ Text Risen Savior to 77977
- ⇒ Required Minimum Distribution (RMD) OR Stock/Asset Transfers—contact Susan Mello at susan.mello@rslcs.org for more information.
- ⇒ By Mail: 23914 S Alma School Rd, Chandler, AZ 85248



Diane Bergelin	Apr 1	Elyse Wolf	Apr 11	Ron Jaso	Apr 19
Alicia Endicott	Apr 1	Joshua Young	Apr 11	Teresa De Vito	Apr 19
Kimberly Buchanan	Apr 2	Pete Ponder	Apr 11	Crystal Kunka	Apr 19
Becky Magee	Apr 2	Kristi Garcia	Apr 11	Karen Coleman	Apr 20
Marlee Soliday	Apr 2	Jo Timmons	Apr 12	Roger Senske	Apr 20
Janet Bauer	Apr 2	Alexis Buchanan	Apr 12	Jennifer Miller	Apr 21
Karen Moline	Apr 2	Lawrence Gagnon	Apr 12	Mark Chase	Apr 21
Robert Becker	Apr 2	Pat Tamm	Apr 12	Sherry Ott	Apr 21
Lindsey Underwood	Apr 3	Tenni Annen	Apr 12	Richard Graham	Apr 21
Lisa McCain	Apr 3	Heather Melendez	Apr 12	William Vail	Apr 22
Amelia Nimmer	Apr 3	William Kabele	Apr 12	Kathryn Johnson	Apr 22
Dale Pettis	Apr 3	Teresa Murphy	Apr 13	Anthony Weis	Apr 22
Marilee Smith	Apr 3	Lily Wirth	Apr 13	Sloane Crosley	Apr 22
Jim Junkermeier	Apr 3	Emma Ramnarine	Apr 13	Donna Patti	Apr 22
Gary Huber	Apr 4	Emery Gillespie	Apr 13	Dennis Nelson	Apr 22
Colton Lynar	Apr 4	Laura Lasiter	Apr 14	Monica McLean	Apr 23
Brooke Hammontree	Apr 5	Barbara Weber	Apr 14	Kate Menghini	Apr 23
Aubrey Willenbrink	Apr 5	Austin Factor	Apr 14	Daphne Baker	Apr 23
Randall Ruis	Apr 5	Morgan Grace Burchill	Apr 14	Trygve Fekjan	Apr 24
Rosellia Stirlen	Apr 5	Logan Hightower	Apr 14	Kenneth Meyer	Apr 25
Maya Miller	Apr 5	Diane Newman	Apr 14	Brayden Sweetman	Apr 26
Andrew Kerr	Apr 6	Cindy Long	Apr 14	Jay Gallipo	Apr 26
Chuck Horn	Apr 6	Patty Van Houten	Apr 14	Pam Seckinger	Apr 26
Lynsey Schmidt	Apr 6	Liberty Firman	Apr 15	Joel Endicott	Apr 26
Dave Bolio	Apr 6	Charleen Henderson	Apr 15	Dick Koskovick	Apr 27
Ian Peper	Apr 6	Richard Brettfeld	Apr 15	Larry Portschi	Apr 27
Jerry Long	Apr 6	Gwen Vining	Apr 16	J. Susan Thomas-Erickson	Apr 27
Susie Mathias	Apr 7	Matthew Fasciana	Apr 16	Shari Beadle	Apr 28
Reginald Jokisch	Apr 7	Dorothy Roberts	Apr 16	Christopher Duensing	Apr 28
Eugene Nelson	Apr 7	Betty Collier	Apr 16	Luke Ritchie	Apr 28
Dolores Kvamme	Apr 8	Brooke Mans	Apr 16	Lexi Appleton	Apr 28
Abigail Sackett	Apr 8	Sydney Stevens	Apr 17	Gunnar Wiley	Apr 29
Whitney Lorentz	Apr 8	James Knight	Apr 17	Preston Sackett	Apr 30
Anthony Sulsona	Apr 9	Larry Metzger	Apr 18	Jamison Sackett	Apr 30
Sage Dougher	Apr 10	Michelle Burcham	Apr 18		
Abraham Evans	Apr 10	Hunter Gloss	Apr 18		
Jacob Ramnarine	Apr 10	Ray Welker	Apr 19		



Randy & Dolly	Pschigoda	Apr 4
John & Kelly	Della Chiesa	Apr 5
Carl & Kathryn	Johnson	Apr 6
James & Bettina	Torre	Apr 7
John & Beverly	Burkhart	Apr 10
Steven & Marianne	Perkins	Apr 12
David & Tammy	Knutson	Apr 16
Annie & Jason	Appleton	Apr 17
David & Crystal	Kunka	Apr 18
Todd & Shannon	Zemlock	Apr 19
Thomas & Jeannine	McLean	Apr 20
James & Donna	Walgren	Apr 20
Robert & Alice	Kurz	Apr 24
Lyle & Elizabeth	Replogle	Apr 24
Jennifer & Michael	Balbarin	Apr 27

Need someone to talk to?

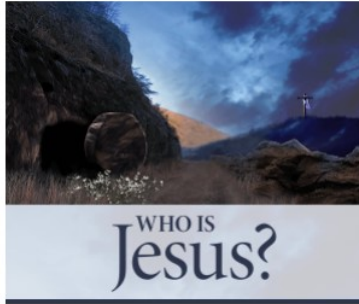
You don't have to go it alone.

Contact the church office
to make an appointment
with a Stephen Minister



**STEPHEN
MINISTRY**





Who is Jesus?

This is the most important question we can ask:

Who is Jesus?

In a world in which information is readily available and opinions abound, this fundamental question stands above all other inquiries and considerations.

The Lutheran Church—Missouri Synod believes Jesus is exactly who He said He is. Along with the ancient Church, we confess that Jesus is true God and true man in one person. He is the Son of God who was crucified and raised from the dead for the salvation of all who trust in Him.

Christ is not Jesus's last name, but identifies Him as the Messiah (Christ is the Greek translation of Messiah), the fulfillment of the Old Testament promises that God saves His people.

This fulfillment and salvation happened in history in real time and in a real place (first century AD in Israel) through a flesh-and-blood person named Jesus.

The Bible is the true and trustworthy Word of God that records God's love for the world through His Son Jesus. The miracles recorded in the Gospels and the teachings of Jesus are true and accurate.

Jesus physically died on a cross and physically rose from the dead in three days. He physically ascended into heaven, and the Church awaits His second coming when He will judge all people.

Those who trust in Jesus as their Savior will rise to eternal life in heaven. Those who deny Jesus and live in their sin will be cast out of His presence to hell.

Article from the LCMS Missouri Synod Website